

[Useful Tips]

How do I continue monitoring or operating the V9 even if a part of the machine stops?

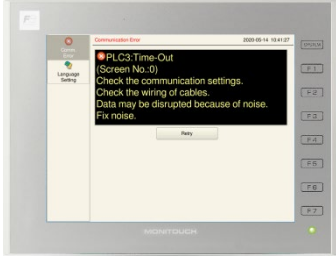
Before

If a part of the machine is powered off, the communication error screen appears. Meanwhile, I cannot monitor or operate other parts of the machine.

Monitoring console

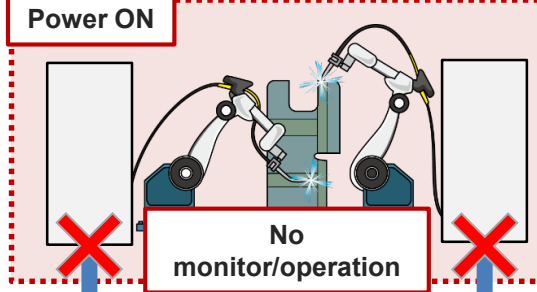


Enlarged image



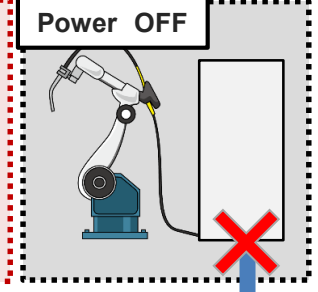
[Error handling: Stop]
The **error screen** appears.

Power ON



No monitor/operation

Power OFF



It is a problem
I cannot monitor
on the monitoring
console...

If the machine is not
in use, I want to turn
it off to save
electricity...

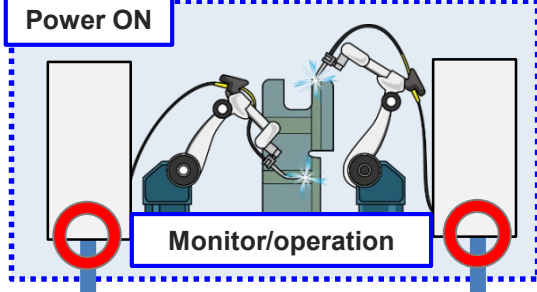
Changing the communication error handling setting from "Stop" to "Disconnect" ...

After

The V9 only communicates with the active device. You can monitor and operate because the error screen does not appear.

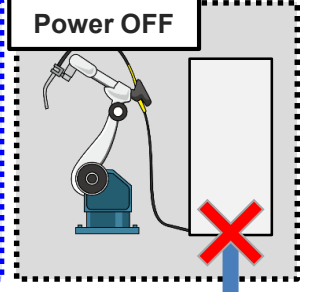


Power ON



Monitor/operation

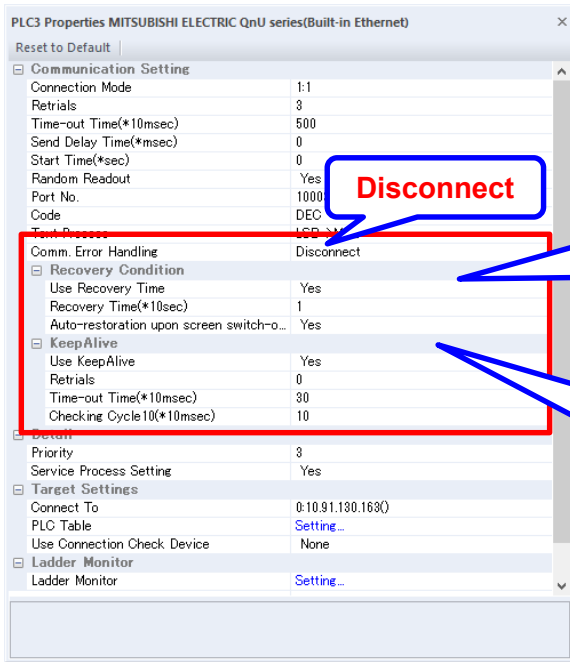
Power OFF



Save energy at ease!
Save money!

Configuration of settings

Comm. Error handling (Hardware Setting -> PLCx Properties)

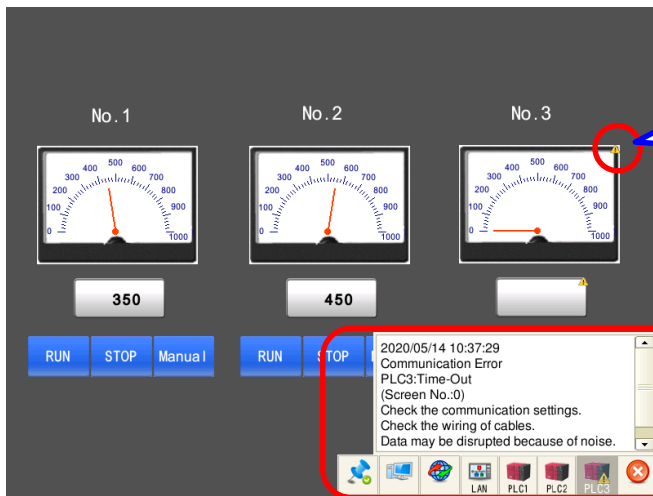


Recovery Condition:
 The V9 automatically checks for communication recovery. After communication is restored, you can monitor and operate the connected devices **without any operation**.

KeepAlive:
 The detection of loss of communication is fast, so the wait time for recovery confirmation is shorter.
 * Only Ethernet connection available.



How can I check the communication status?



! icon:
 It appears on parts that use devices of disconnected equipment.

Status bar:
 It displays the error content.

Communication status is also output to system devices \$Px: 00010 or later. You can display the status on a lamp part, for example.

Choose the right “communication error handling” according to the use of the machine and aim for the one that you can use safely!

